



AXIS



by Globaltronic 
spreading technology



Advanced System Analytics

Integrated building management platform

Axis is an integrated building management platform used to manage the technology involved in buildings. All the services installed in a building are integrated into the AXIS system. A single front-end interface is provided, to control all the subsystems.





Full control of the installation *through a single* interface

Intelligent building management system brings together information related to different operating systems, through a single interface. This makes monitoring and analysis more straightforward and allows information from one system to influence the control of other systems.

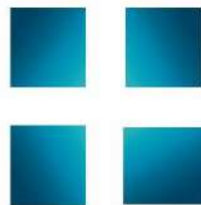


**Remote
management**
Full control



**Efficient
management**
Cost reduction

Full integrated platform



Embedded in the **Gateway**

Linux Operating System
Powering Wi-Fi and Ethernet with Multiple RF
interfaces and protocols



powered by the powerful
WIPIIDO board

Compact High Performance Single Board Computer
For IoT - Internet of Things
Interconnecting the dots

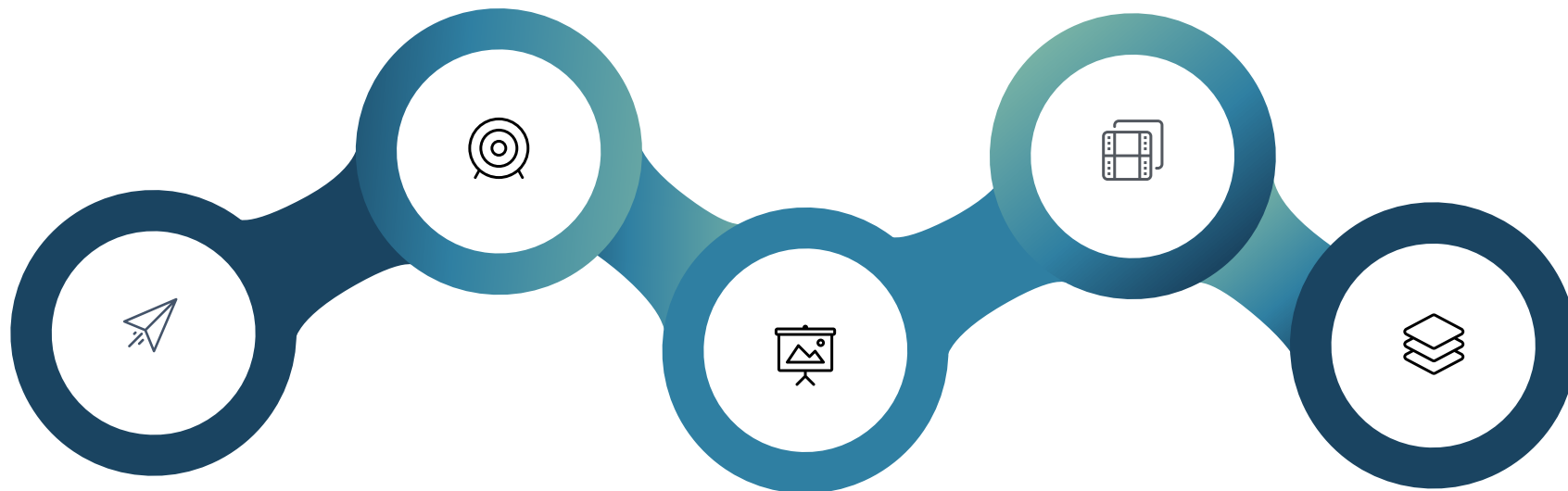
Key features



- ✓ **Perfect Controllability**
Remote configuration, management and control all different system, providing real-time information
- ✓ **Real-Time Data**
Automatic analysis and evaluation of infrastructure data, status reporting and failure alerts
- ✓ **Map-Based Visualization**
Infrastructure is represented on a graphical interface, that enables you to locate and control with ease.
- ✓ **Intuitive Platform**
Intuitive content editing, automatic content actualization, full monitoring of relevant system information
- ✓ **Failure Reports**
Axis can identify several infrastructure-related faults and automatically send failure reports.
- ✓ **A single front-end interface**
A single interface facilitates access to information, provides a broad view of the entire infrastructure and ensures greater control over all operational processes

Applications

Specific solutions for your needs



Industrial spaces

Warehouses
Trading
Offices



Public spaces

Schools
Museums
City Hall



Health and wellness

Health Offices
Clinic



Circulation spaces

Passageway
Courtyard
Terrace
Balcony



Sports spaces

Sports halls
Gymnasiums

For whom it is intended?



● Building managers

The Axis system combines efficient management with cost savings, both energy and maintenance, to ensure adequate lighting for each room.

● Operators

The Axis system provides an overview of all the infrastructures, assisting the maintenance planning and the equipment repairing.

● Lighting Providers

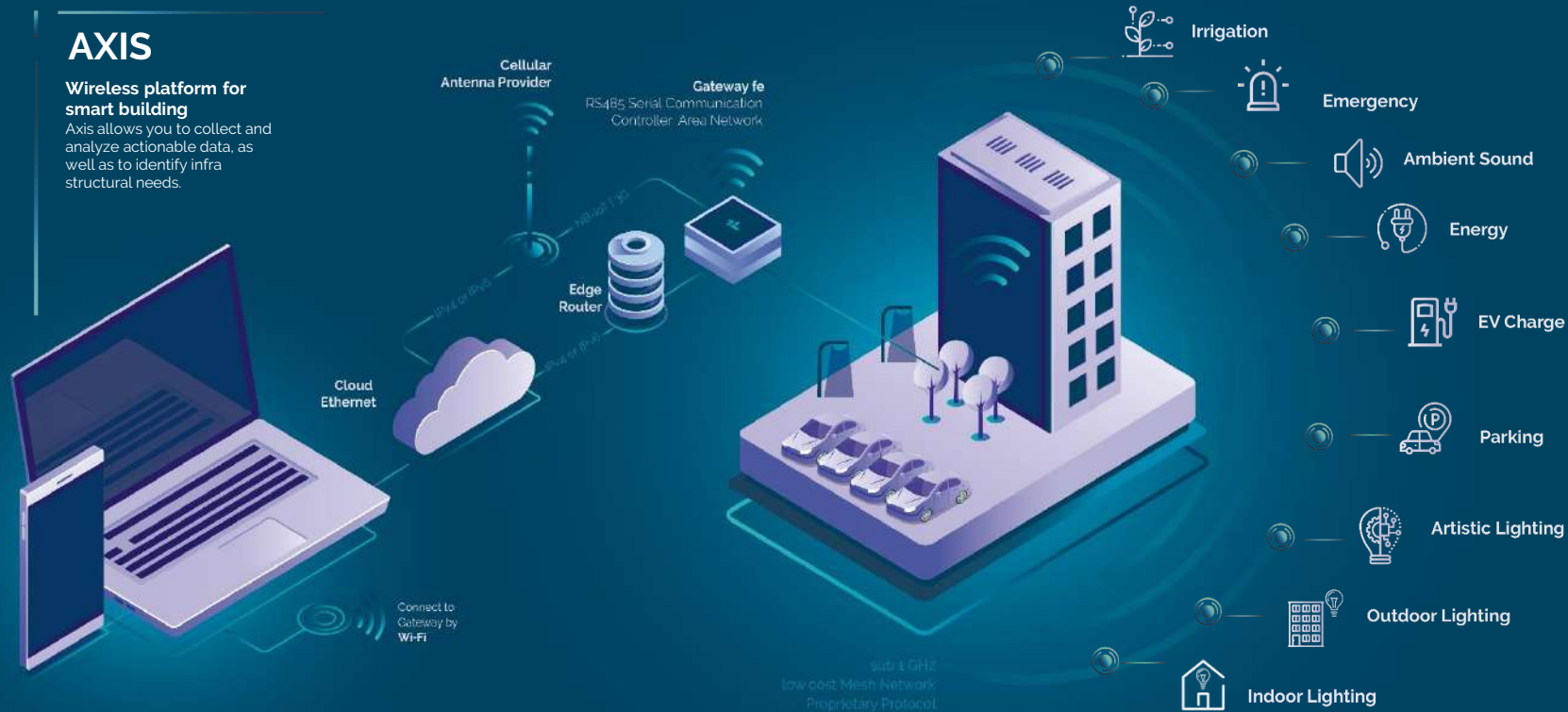
The Axis system offers the highest level of customer service by identifying anomalies, reducing energy consumption and providing detailed information about the building.

Integrated services

AXIS

Wireless platform for smart building

Axis allows you to collect and analyze actionable data, as well as to identify infra structural needs.



Indoor lighting



Control and optimize *building lighting* with the intelligent **AXIS** system

The Axis system makes use of the information as the key that allows the user to create customized LED interior lighting solutions, supported by radio technology. Adaptable to any interior environment, ensuring the right amount of lighting where and when it is needed.



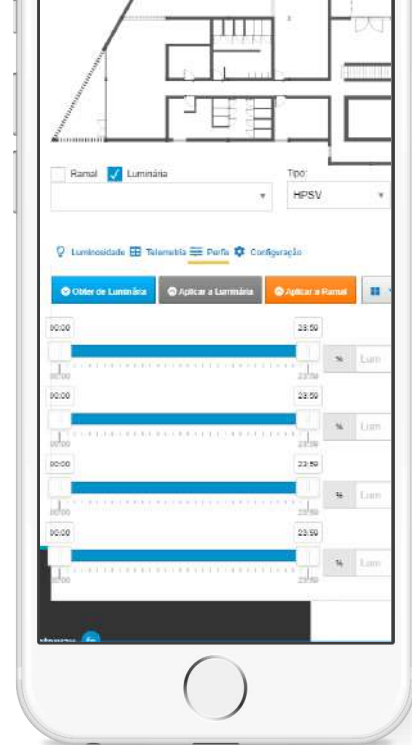
35 %

35% of the world's energy is spent on buildings



50 %

You can save up to 50% when using the Axis system



HPSV V3



Light Sensor



Emergency Button

Push dimming



RF



Gateway FE+



Gateway Fe +

Real-time information of luminaire status
Remote control of brightness
Multi user layer access (administrator, user)
Client interface customization
Expandable



HPSV_V3*

RF controller that connects the Gateway Fe+ commands to the luminaire.

Power meter function

Real time clock and calendar

Autonomous function mode

Schedule profile of brightness

Protocol output for many LED Drivers (DALI, 0-10V, PWM)

Plug and play connectivity with motion sensor and light sensor

*inside luminaire tray

A circular inset image showing a ceiling with several recessed circular lights. One light is highlighted with a green outline, indicating it is active.

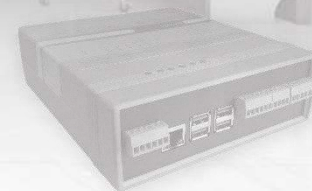
Motion Sensor

Connected to HPSV_V3, allows to have light only when truly needed.

A circular inset image showing a ceiling with a grid of recessed lights. A single light in the center is highlighted with a black outline, indicating it is active.

Light Sensor

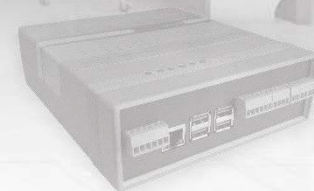
Connected to HPSV_V3 allows to have only the amount of light needed. .



The background of the slide is a grayscale image of a modern office interior with desks, chairs, and large windows. A circular inset on the left side shows a close-up of a control panel with a red emergency button and a push dimming button. A man in a suit is walking in the background of the inset.

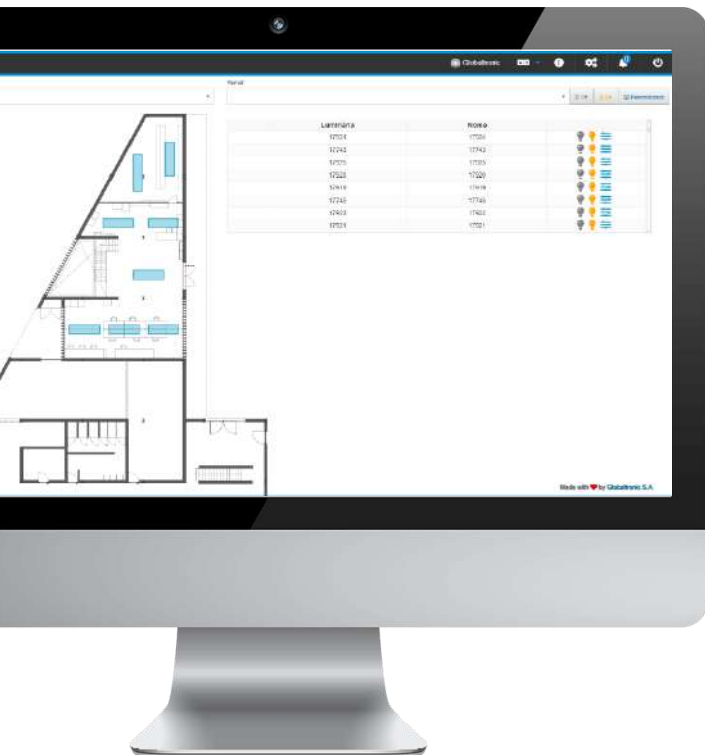
Emergency Button and Push Dimming Button

RF buttons that allows rapid user interface with lamps. Emergency button when set, configures all luminaires to 100% of brightness, to enlighten the environment. Push Dimming is a way to set mood with a simple touch.



Key features

AXIS Platform



- ✓ **Dynamic regulation**
Scheduling and parameterization of time profiles by luminaire, or group of luminaires
- ✓ **Real-Time Data**
Automatic analysis and evaluation of infrastructure data including status reporting and failure alerts
- ✓ **Map-Based Visualization**
A Map representation of each luminaire in space, allows user ease luminaire selection, management and control.
- ✓ **Telemetries**
Individual luminaire status information
- ✓ **E-mail information**
User can receive daily and weekly reports, as well as other custom information.
- ✓ **Macros**
Allows users to set and create different reactions of the system , responding to the information compiled by Axis platform.
- ✓ **Sensors**
Allows the integration of sensors in order to automatically control the luminous flux.
- ✓ **Emergency**
Allows virtual integration of an emergency button to activate luminaires in their maximum brightness
- ✓ **Detection of anomalies**
Individual reference settings, allows users to easily detect and identify anomalies in system behaviour.



How can my building **benefit** from the **Axis system**?

Complete and scalable solution



Efficient and sustainable management



Reduction of flaws and anomalies, from real-time monitoring



Increased equipment lifetime



Simple and wirelessly plug and play installation



Reduction of energy costs



Registration of interventions and maintenance planning

Address:
Avenida das 2 Rodas, nº 830,
3750-860 Borralha, Portugal



Phone Number:
+ 351 234 604 112



Email:
geral@globaltronic.pt



Site:
www.globaltronic.pt

