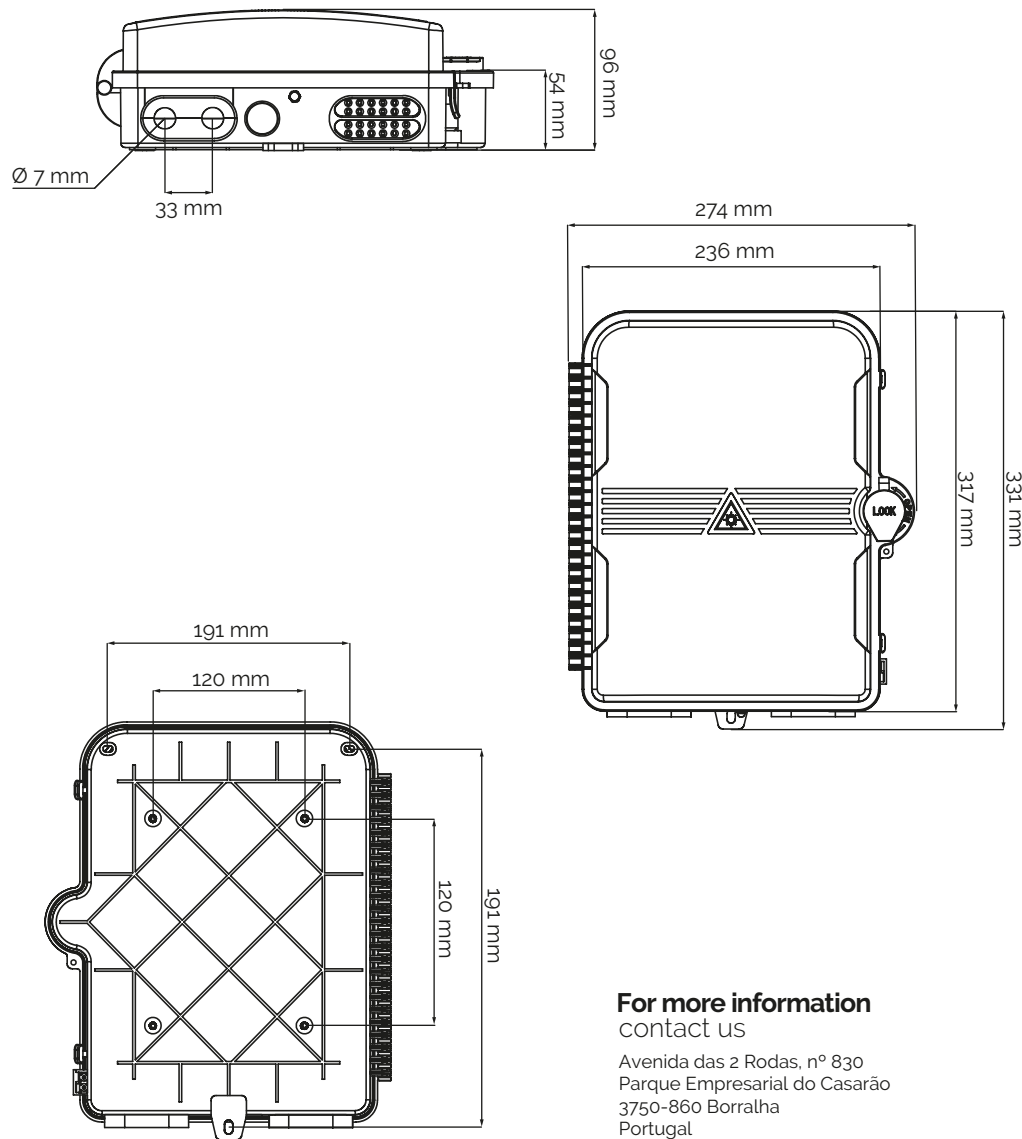


Installation Guide

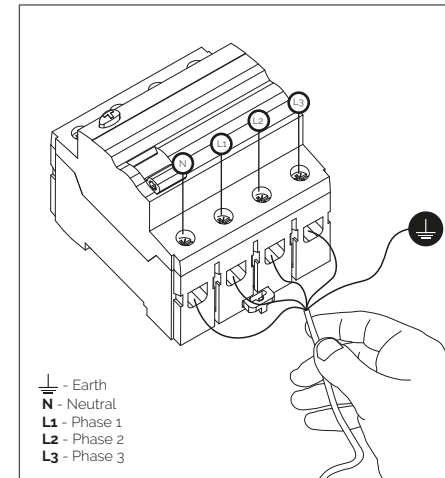
EV Charger Evolut - EV2Share | Version: A4 | Review date: 16-03-2022



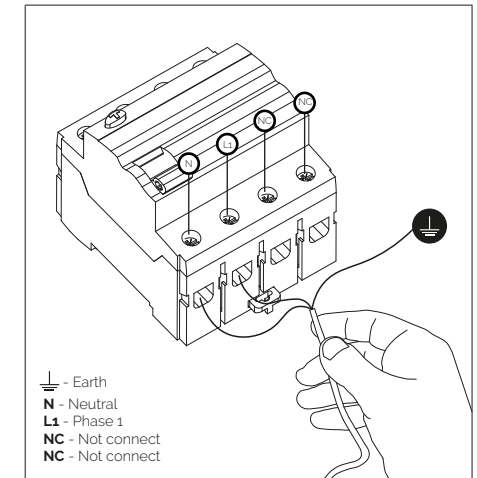
For more information contact us

Avenida das 2 Rodas, nº 830
Parque Empresarial do Casarão
3750-860 Borralha
Portugal

E-mail: geral@globaltronic.pt
Telephone: (+351) 234 604 112
Telephone: (+351) 234 612 687



Three-phase connection
Connections



Single-phase connection
Connections

Technical Specifications

Power Supply Input

220 ~ 245 VAC, 50 a 60Hz monofásica ou 400 VAC trifásica

Power Consumption

Deep sleep mode / idle < 1W

Maximum Current

8A ~ 32A each phase

Charging Mode

IEC 61851-1 (Mode 3)

Protection

Contactor 40A, 4NO, 230V-50Hz and 4 poles Residual Current Circuit Breaker
40A 30mA A Class

Operating Conditions

Operating temperature: -10°C to 65°C; Operating Humidity: 20% to 90% RH, non-condensing;
Storage temperature: -40°C to 80°C, 10% to 95% RH, non-condensing

