



SINGELU

Advanced Systems Analysis

Lighting management software

SInGeLu enables users to remotely control, monitor and manage the lighting infrastructure by providing a software platform with a simple and intuitive user interface for Smart Cities.

The SInGeLu platform generates value for the end user by adding data, networks, analysis and device management in real time. An investment with guaranteed benefits in the future. The open architecture allows seamless integration with third party hardware and software.



Benefits

for your city

- ✓ Energy savings
- ✓ Maintenance cost reduction
- ✓ Reduces light pollution and CO2 emissions
- ✓ Wireless platform for Smart Cities
- ✓ Efficient and sustainable management
- ✓ Unique and intuitive front end interface



Smart Cities

Main applications

Public spaces

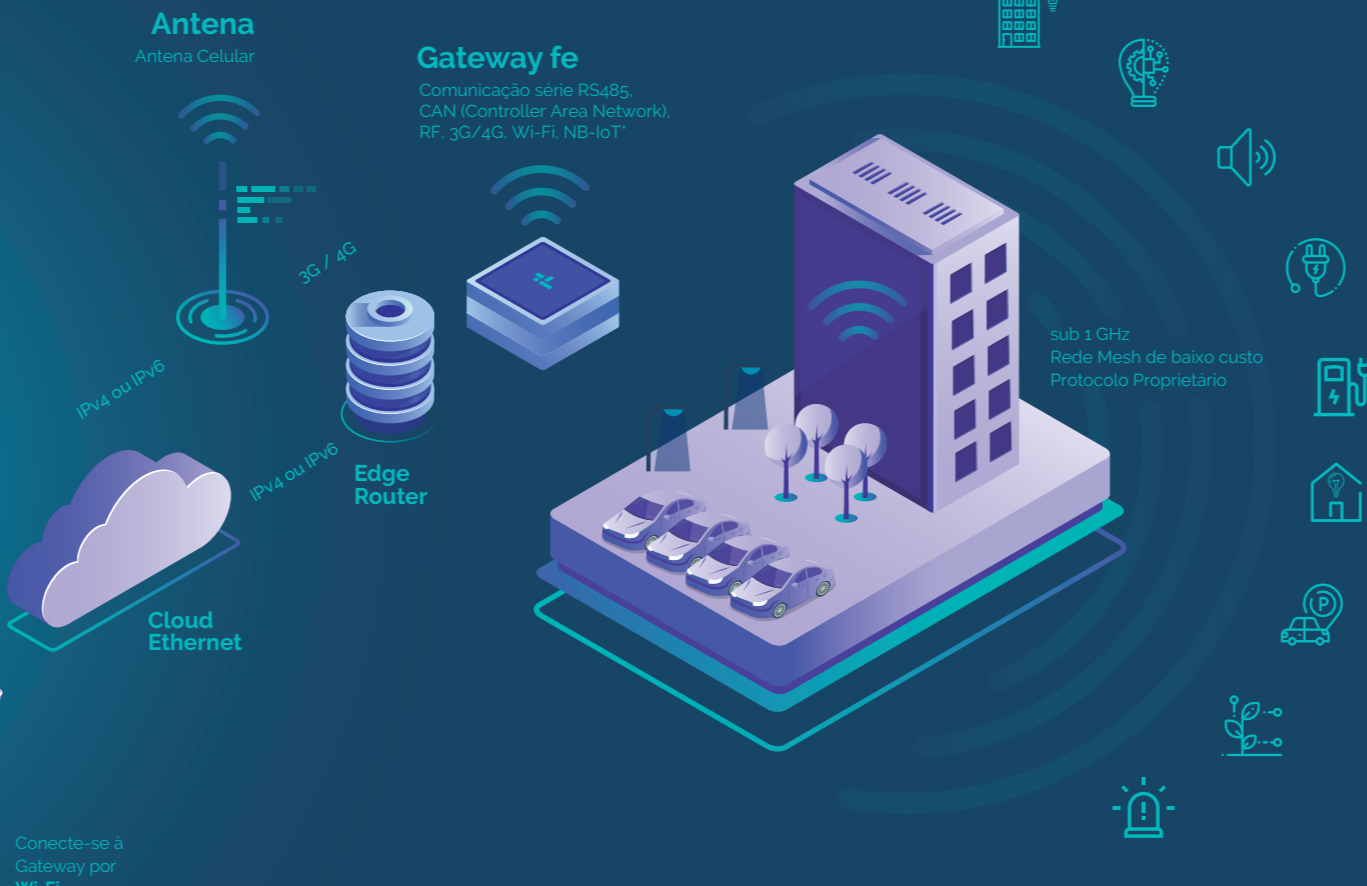
Schools
City Halls
Parking
Public squares
Roads
Pedestrian zones
Sports centers

SInGeLu



Plataforma sem fios para smart cities

O SInGeLu permite coletar e analisar dados, bem como identificar necessidades da sua cidade.



Integrated services

- Ambient Sound
- Artistic Lighting
- EV Charger
- Energy
- Irrigation
- Parking
- Emergency
- Outdoor Lighting
- Iluminação Interna

Full Control Of The Installation

The SInGeLu platform gathers information related to different lighting systems through a single interface. This makes monitoring and analysis of the entire system simpler and more intuitive.

Key features



Perfect Controllability

SInGeLu allows remote configuration, monitoring, management and control of all different system, providing real-time information.



Automatic Data Analysis

Provides automatic analysis and evaluation of infrastructure data, including status reports and fault alerts.



Failure Alarms and Reports

Identify several infrastructure-related faults and automatically send failure reports, which results in reduced maintenance costs.



Service Integration

Integrating all operational services into a single interface facilitates access to information, provides a broad view of the entire infrastructure and ensures greater control over all operational processes.



Intuitive Platform

Intuitive content editing, automatic update and complete monitoring of relevant system information.



Map-Based Visualization

The infrastructure is represented on a graphical interface, which enables you to locate, monitor and control each individual luminaire through a map-based visualization.

Cofinanciado por:

**COMPETE
2020**

**PORTUGAL
2020**



UNIÃO EUROPEIA
Fundos Europeus
Estruturais e de Investimento



contact us

Avenida das 2 Rodas, n.º 830
Parque Empresarial do Casarão
3750-860 Borralha
Portugal

E-mail: geral@globaltronic.pt
Telefone: (+351) 234 604 112
Telefone: (+351) 234 612 687

© 2020 Globaltronic, all rights reserved. All information is subject to change without notice.
All mentioned trademarks belong to their respective owners and are used for reference only.