



# SINGELU HORIZONTAL

**Globaltronic**   
spreading technology

Singelu Horizontal is a visualization platform that functions as an interactive kiosk, designed to present operational information in an accessible and intuitive way. It receives data directly from the central platform Singelu V2, ensuring real-time synchronization with the management system.

The solution is intended for installation in public or operational environments, allowing quick and clear access to relevant data on:

- Public Lighting – Status of lighting points, intensity levels, energy consumption, and failures.
- Technical and Operational Alarms – Notifications of malfunctions, critical alerts, and communication failures.
- Urban Mobility – Information on traffic, parking space occupancy, and active mobility data.
- Environmental Sensors – Data on temperature, humidity, and more.
- Sound – Data related to the sound system, including channel, playlist, organization, and volume level.
- Emergency – Emergency alerts, status of safety equipment, and critical notifications.

## Advantages

- ✓ Intuitive visualization
- ✓ Centralized monitoring
- ✓ Georeferenced view of the installation
- ✓ Real-time decision support



## Applications

- Municipal control rooms
- Urban mobility centers
- Public buildings
- Smart City platforms
- Public information panels

version A1 | 2025 revision: 24/06/2025

WWW.GLOBALTRONIC.PT



Co-financiado por:

**COMPETE  
2020**

**PORTUGAL  
2020**

 **UNIO EUROPEIA**  
Fundo Europeu  
de Investimento



The interface is organized into thematic tabs, enabling quick and intuitive access to information. The display intervals for each tab are configurable, allowing the update frequency to be adjusted according to the needs of each environment. In addition, the tabs can be customized to meet specific client requirements, ensuring maximum flexibility.

Optimized for efficient reading, the solution is designed for large horizontal screens, making it ideal for control rooms, public spaces, or technical areas dedicated to urban management.

## Functional Tabs of the Platform

### Lighting

Status, circuits, gateways alarms

### Alarms

Alarm identification

### Mobility

Mobility average

### Sensors

Temperature and humidity

### Sound

Background sound

### Emergency

Active emergencies

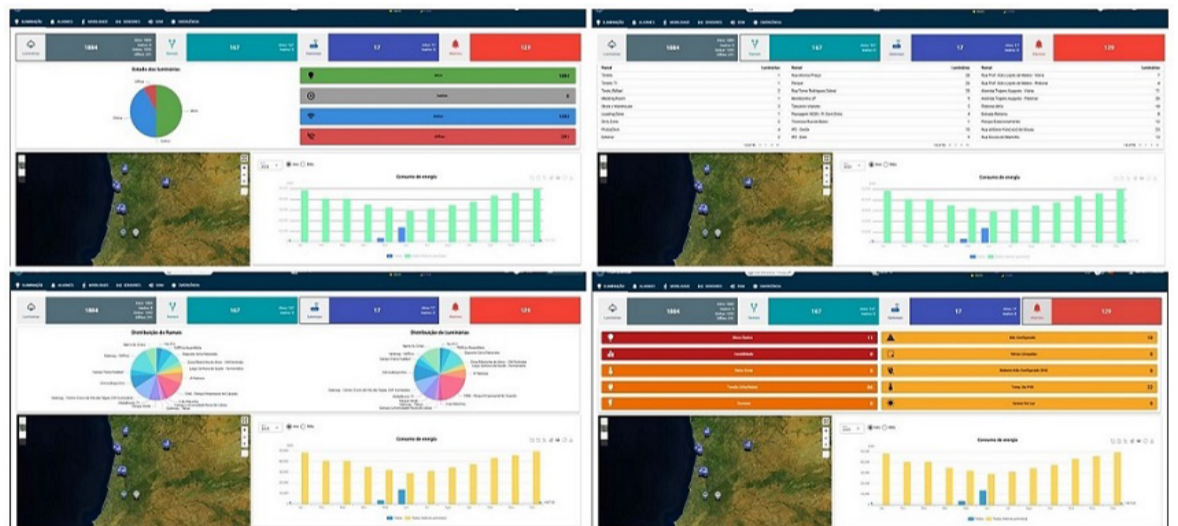
### Tickets

Incident registration and management

### Lighting

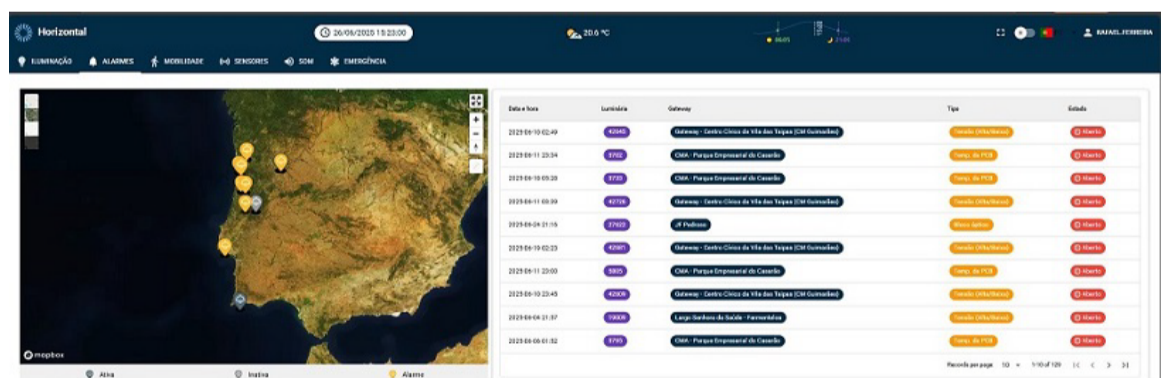
General monitoring of the lighting network with the following data:

- Total number of luminaires
- Individual status (on, off, fault)
- Branches with luminaire count per branch
- Distribution of gateways by zone
- Summary of alarms by type and quantity



### Alarms

- Alarm date and time
- Associated luminaire
- Corresponding gateway
- Alarm type (e.g., failure, disconnection)
- Status (active, resolved, etc.)





# SINGELU HORIZONTAL

## Mobility

The platform enables real-time visualization of mobility pattern data.

Key features include:

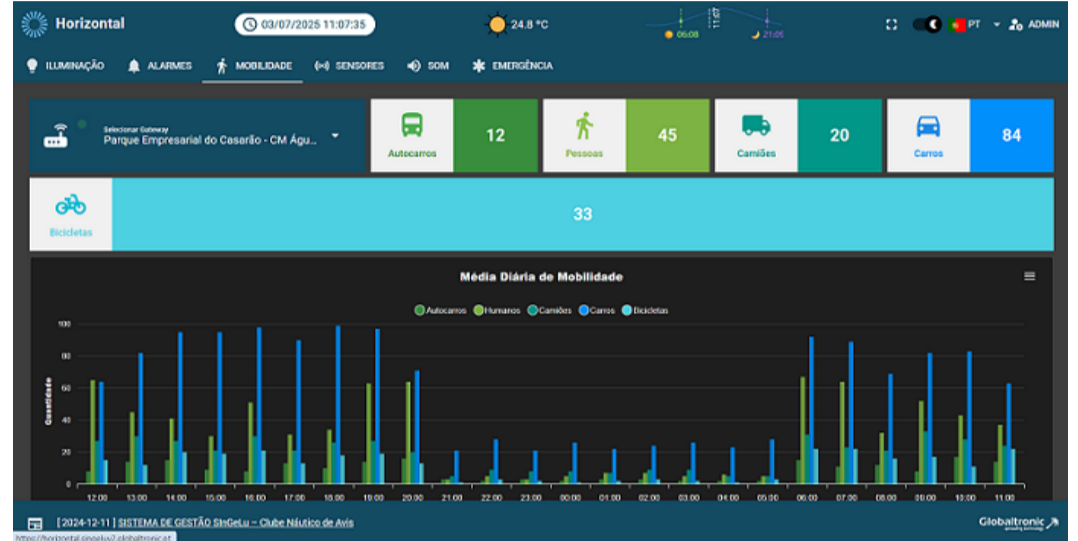
Areas with the highest movement (identification of zones with the greatest flow)

Main travel routes used by people

Gateway selection to access zone-specific data

Real-time counting of:

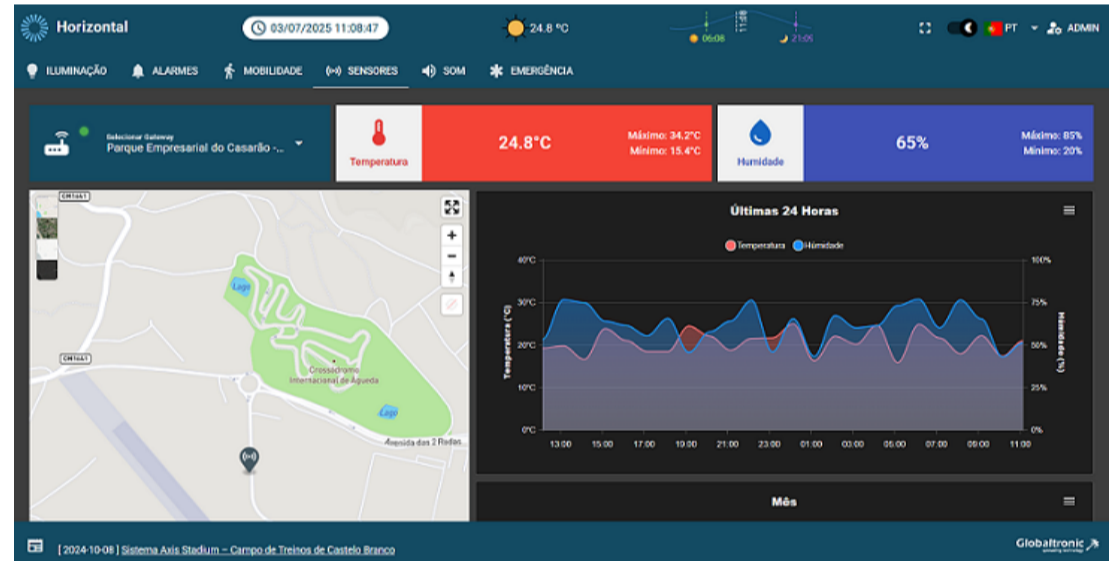
- Cars
- Buses
- People
- Trucks
- Bicycles



## Sensors

Provides data from external sensors for environmental monitoring and other parameters, including:

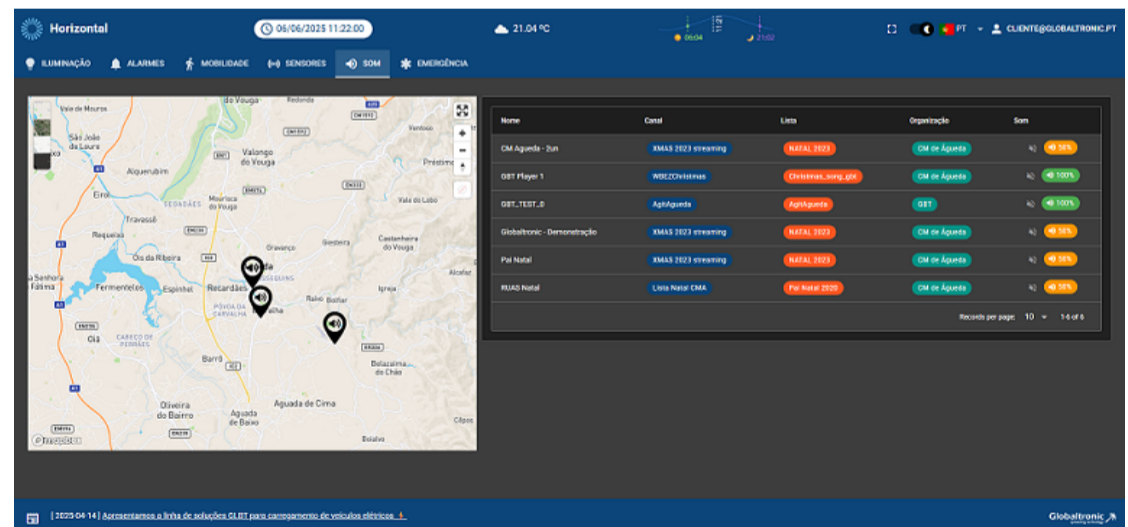
- Temperature
- Humidity



## Sound

Displays data related to the sound system, including:

- Currently playing channel
- Active playlist
- Track organization
- Current volume level



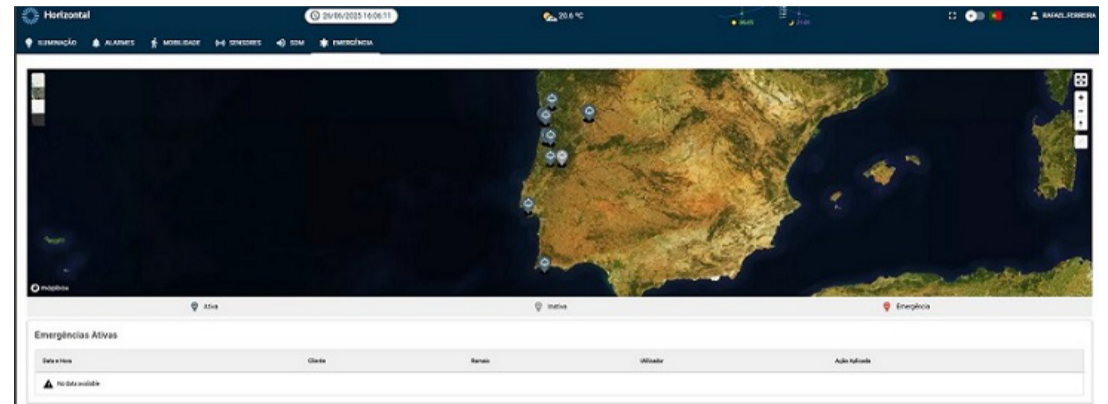


# SINGELU HORIZONTAL

## Emergency

Displays a log of emergency events, with the following information:

- Date and time of the event
- Client
- Associated extension
- User who performed the action
- Status of the occurrence



## Tickets

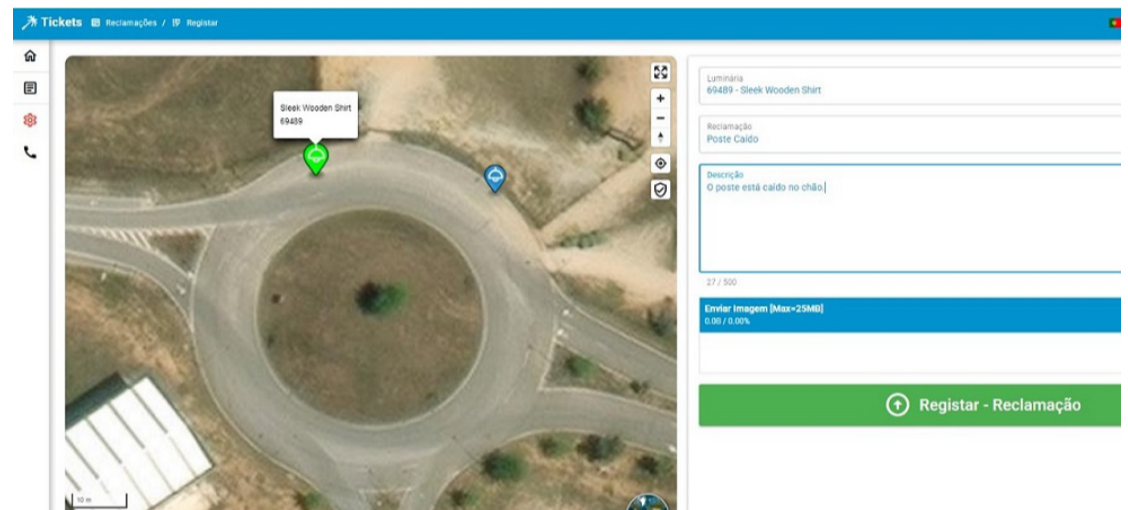
Displays data related to incident management and allows:

Citizens:

- Report failures in public lighting
- Track and view the status of the incident

Municipalities:

- Record and manage incidents
- Assign responsible parties and update progress
- Improve control and management efficiency



## Contact us and find out how this solution fits your needs

Avenida das 2 Rodas, nº 830  
Parque Empresarial do Casarão  
3750-860 Borralha  
Portugal

E-mail: geral@globaltronic.pt  
Telephone: (+351) 234 604 112  
Telephone: (+351) 234 612 687  
(Call to national landline network)

© 2025 Globaltronic, all rights reserved. All information is subject to change without notice.  
All trademarks mentioned belong to their respective owners and are used only as a reference.